



CBR1 mouse mAb

Catalog No	YP-Ab-02368
Isotype	IgG
Reactivity	Human
Applications	WB;ICC
Gene Name	cbr1
Protein Name	
Immunogen	Purified recombinant human CBR1 protein fragments expressed in E.coli
Specificity	This antibody detects endogenous levels of CBR1 and does not cross-react with related proteins.
Formulation	Liquid in PBS containing 50% glycerol, 0.5% BSA and 0.02% sodium azide.
Source	Monoclonal, Mouse
Purification	The antibody was affinity-purified from mouse ascites by affinity-chromatography using epitope-specific immunogen.
Dilution	wb 1:1000 icc 1:100
Concentration	1 mg/ml
Purity	≥90%
Storage Stability	-20°C/1 year
Synonyms	15 hydroxyprostaglandin dehydrogenase [NADP];15-hydroxyprostaglandin dehydrogenase [NADP];Carbonyl reductase [NADPH] 1;CBR 1;CBR1;CBR1_HUMAN;CRN;NADPH dependent carbonyl reductase 1;NADPH-dependent carbonyl reductase 1;Prostaglandin 9 ketoreductase; Prostaglandin 9-ketoreductase;Prostaglandin E(2) 9 reductase;Prostaglandin-E(2) 9-reductase;SDR21C1.
Observed Band	30kD
Cell Pathway	Cytoplasm .
Tissue Specificity	Expressed in kidney (at protein level).
Function	catalytic activity:(13E)-(15S)-11-alpha,15-dihydroxy-9-oxoprost-13-enoate + NADP(+) = (13E)-11-alpha-hydroxy-9,15-dioxoprost-13-enoate + NADPH.,catalytic activity:(5Z,13E)-(15S)-9-alpha,11-alpha,15-trihydroxyprosta-5,13-dienoate + NADP(+) = (5Z,13E)-(15S)-11-alpha,15-dihydroxy-9-oxoprost-5,13-dienoate + NADPH.,catalytic activity:R-CHOH-R' + NADP(+) = R-CO-R' + NADPH.,function:Catalyzes the reduction of a wide variety of carbonyl compounds including the antitumor anthracycline antibiotics. Can convert prostaglandin E2 to prostaglandin F2-alpha.,similarity:Belongs to the short-chain



dehydrogenases/reductases (SDR) family.,subunit:Monomer.,

Background

The protein encoded by this gene belongs to the short-chain dehydrogenases/reductases (SDR) family, which function as NADPH-dependent oxidoreductases having wide specificity for carbonyl compounds, such as quinones, prostaglandins, and various xenobiotics. Alternatively spliced transcript variants have been found for this gene. [provided by RefSeq, Nov 2013],

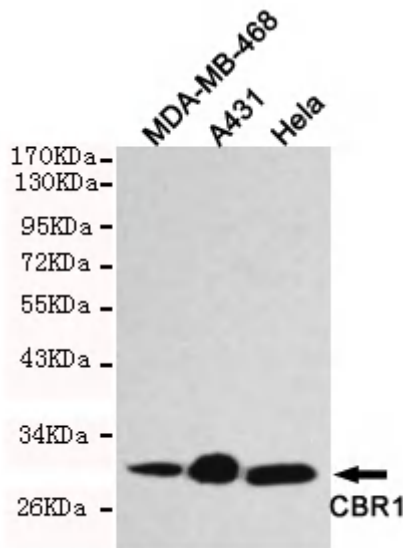
matters needing attention

Avoid repeated freezing and thawing!

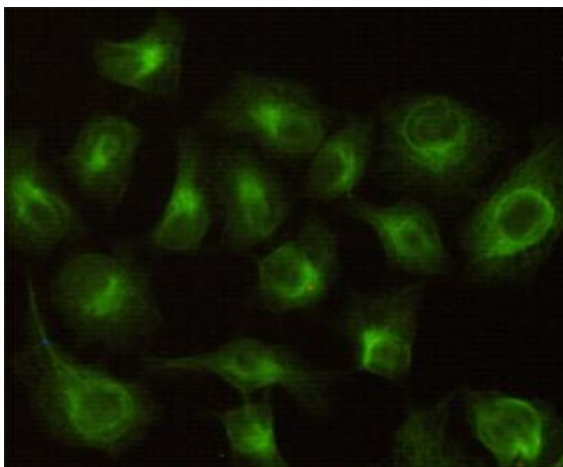
Usage suggestions

This product can be used in immunological reaction related experiments. For more information, please consult technical personnel.

Products Images



Western blot detection of CBR1 in HeLa,A431 and MDA-MB-468 cell lysates using CBR1 mouse mAb (1:1000 diluted).Predicted band size:30KDa,Observed band size:30KDa.



Immunocytochemistry stain of HeLa using CBR1 mouse mAb (1:100).